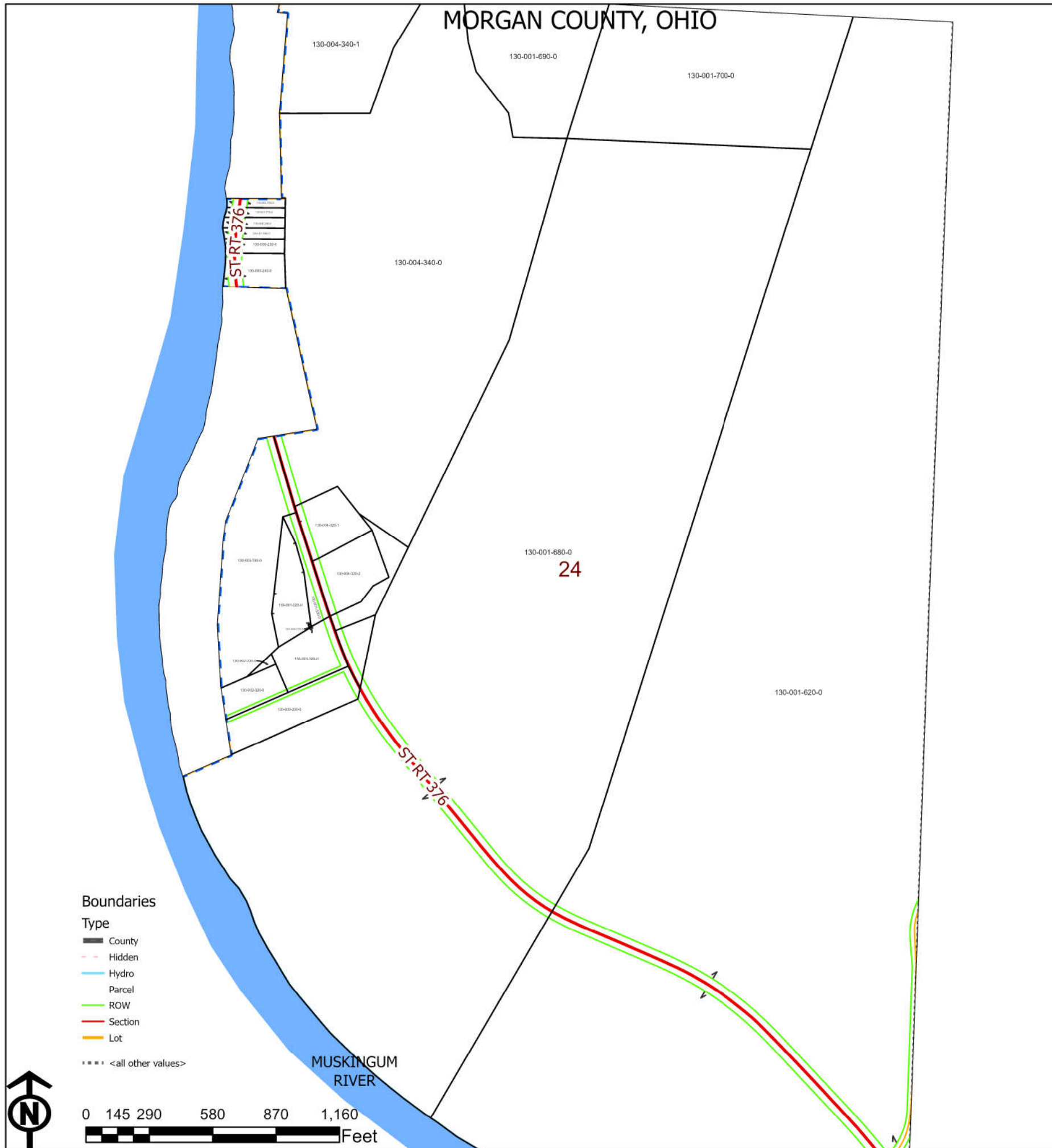


MORGAN COUNTY, OHIO

MORGAN TWP. SEC. 24, T-10, R-12



PIN	Owner	LegalDescr	VOL	PAGE	Acres
130-001-620-0	ARNOLD HILLARY J	R12 T10 S00 S 24-25	OR213	447	166.53
130-001-680-0	ARNOLD HILLARY J	R12 T10 S24 SD 7	OR213	447	117.09
130-001-690-0	ARNOLD HILLARY J	R12 T10 S24 SD 17	OR213	447	7
130-001-700-0	ARNOLD HILLARY J	R12 T10 S24 SD 8	OR213	447	16.38
130-000-230-0	BOONE BRETT W	R12 T10 S24 SD 10	OR224	133	0.39
130-000-240-0	BOONE BRETT W	R12 T10 S24 SD 9	OR224	133	0.86
130-000-200-0	BOONE MILAN W & SHARON	R12 T10 S24 SD 23	D.V 157	263	2.22
130-002-320-0	BOONE MILAN W & SHARON Y	R12 T10 S24 SD 2	OR215	3189	0.93
130-002-330-0	BOONE MILAN W & SHARON Y	R12 T10 S24 SD 26	OR215	3189	0.06
130-001-520-0	HARRISON LYN DIANE	R12 T10 S24 SD 19	OR222	1211	1.466
130-001-530-0	HARRISON LYN DIANE	R12 T10 S24 SD 18	OR222	1211	0.126
130-001-540-0	POWELL KAREN A & WILLIAM C	R12 T10 S24 SD 12	OR205	206	0.278
130-004-240-0	POWELL KAREN A & WILLIAM C	R12 T10 S24 SD 11	OR205	206	0.281
130-004-340-1	STATE OF OHIO DEPARTMENT OF TRANSPORTATION	R12 T10 S24 SD30	OR233	584	6.645
130-003-740-0	TTT SMITH PROPERTIES LLC	R12 T10 S24 SD 27	OR206	438	6.08
130-003-770-0	WEBB RONALD L & LURA F	R12 T10 S24 SD 13	OR209	1922	0.18
130-003-780-0	WEBB RONALD L & LURA F	R12 T10 S24 SD 14	OR209	1922	0.18
130-003-300-0	WELLS JEREMY G & SHANNON L	R12 T10 S24 SD 22	OR63	646	1.568
130-004-320-1	WESTFALL BECKY J	R12 T10 S24 SD 28	OR86	215	1.564
130-004-310-0	ZUMBRO SCOTT D	R12 T10 S24 SD 20	OR157	85	0.004
130-004-320-0	ZUMBRO SCOTT D	R12 T10 S24 SD 16	OR157	85	0.985
130-004-330-0	ZUMBRO SCOTT D	R12 T10 S24 SD 15	OR157	85	0.41
130-004-340-0	ZUMBRO SCOTT D	R12 T10 S24 SD 3	OR157	85	47.665
130-004-320-2	ZUMBRO SCOTT D & KELLY A	R12 T10 S24 SD 29	OR232	4487	1.751